

Transmission tower number 4B/29

Video file number

Tower co-ordinates 55° 50' 20.1" N

04° 22' 42.0" W

SOUND

wind noise	bird song	traffic noise	voices	other
low/moderate/high	nearby/local/distant	nearby/local/distant	nearby/local/distant	nearby/local/distant
continuous	continuous	continuous	continuous	continuous
frequent	frequent	frequent	frequent	frequent
intermittent	intermittent	intermittent	intermittent	intermittent
occasional	occasional	occasional	occasional	occasional
blusters				

TIME SPECIFIC DETAILS

ACTIVITY

weather	vegetation	wildlife	people	traffic	other
fast	still		standing	bikes	
slow	some movement		sitting	motorbikes	
moving clouds	much movement		strolling	cars	
moving shadows			walking	vans	
precipitation			running	trucks	

PERCEPTION

security	intimate	comfortable	safe	unsettling	threatening
stimulus	monotonous	bland	interesting	challenging	inspiring
tranquillity	inaccessible	remote	vacant	peaceful	busy
pleasure	unpleasant	pleasant	attractive	beautiful	

Transmission tower number YB, 30

Video file number _____

Tower co-ordinates 55° 50' 25.4" N 04° 22' 22.4" W

SOUND

wind noise	bird song	traffic noise	voices	other _____
low/moderate/high	nearby/local/distant	nearby/local/distant	nearby/local/distant	nearby/local/distant
continuous	continuous	continuous	continuous	continuous
frequent	frequent	frequent	frequent	frequent
intermittent	intermittent	intermittent	intermittent	intermittent
occasional	occasional	occasional	occasional	occasional
blusters				

TIME SPECIFIC DETAILS



ACTIVITY

weather	vegetation	wildlife	people	traffic	other _____
fast	still		standing	bikes	
slow	some movement		sitting	motorbikes	
moving clouds	much movement		strolling	cars	
moving shadows			walking	vans	
precipitation			running	trucks	

PERCEPTION

security	intimate	comfortable	safe	unsettling	threatening
stimulus	monotonous	bland	interesting	challenging	inspiring
tranquillity	inaccessible	remote	vacant	peaceful	busy
pleasure	unpleasant	pleasant	attractive	beautiful	

Transmission tower number 4B/31

Video file number 31 MOV 004 - 0004

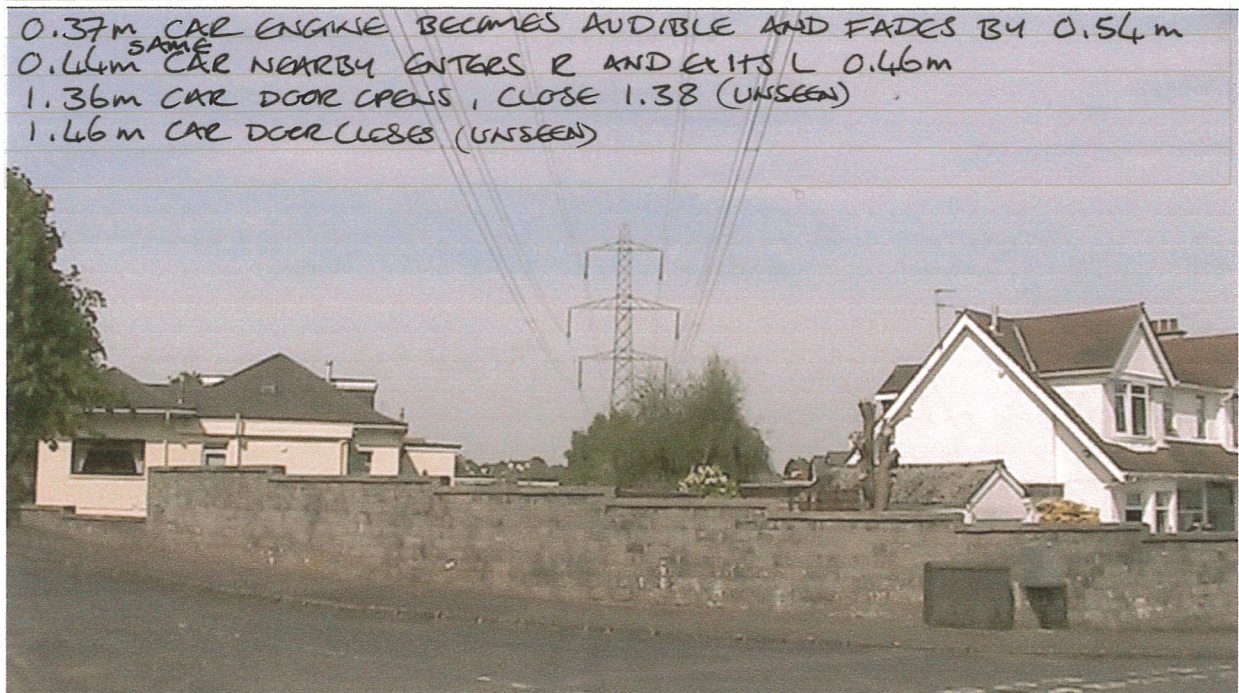
Tower co-ordinates 55° 50' 33.9" N

04° 22' 20.4" W

SOUND

wind noise	bird song	traffic noise	voices	other <u>CAR DOORS</u>
<u>low/moderate/high</u>	<u>nearby/local/distant</u>	<u>nearby/local/distant</u>	nearby/local/distant	nearby/local/distant
continuous	<u>continuous</u>	continuous	continuous	continuous
frequent	frequent	frequent	frequent	frequent
<u>intermittent</u>	intermittent	intermittent	intermittent	intermittent
occasional	occasional	occasional	occasional	<u>occasional</u>
<u>blusters</u>		<u>ONCE</u>		

TIME SPECIFIC DETAILS



ACTIVITY

weather	vegetation	wildlife	people	traffic	other
fast	still		standing	bikes	
slow	<u>some movement</u>		sitting	motorbikes	
moving clouds	much movement		strolling	<u>cars</u> <u>SEE ABOVE IN TIME SPECIFIC</u>	
moving shadows			walking	vans	
precipitation			running	trucks	

PERCEPTION

security	intimate	comfortable	safe	<u>unsettling</u>	threatening
stimulus	monotonous	bland	<u>interesting</u>	<u>challenging</u>	inspiring
tranquillity	inaccessible	remote	vacant	<u>peaceful</u>	busy
pleasure	unpleasant	<u>pleasant</u>	attractive	<u>beautiful</u>	

SUCRATLY

VIDEOING PEOPLES HOMES MIGHT UPSET RESIDENTS!

Transmission tower number 4B132

Video file number _____

Tower co-ordinates 55° 50' 42.8" N

04° 22' 18.2" W

SOUND

wind noise	bird song	traffic noise	voices	other
low/moderate/high	nearby/local/distant	nearby/local/distant	nearby/local/distant	nearby/local/distant
continuous	continuous	continuous	continuous	continuous
frequent	frequent	frequent	frequent	frequent
intermittent	intermittent	intermittent	intermittent	intermittent
occasional	occasional	occasional	occasional	occasional
blusters				

TIME SPECIFIC DETAILS

ACTIVITY

weather	vegetation	wildlife	people	traffic	other
fast	still		standing	bikes	
slow	some movement		sitting	motorbikes	
moving clouds	much movement		strolling	cars	
moving shadows			walking	vans	
precipitation			running	trucks	

PERCEPTION

security	intimate	comfortable	safe	unsettling	threatening
stimulus	monotonous	bland	interesting	challenging	inspiring
tranquillity	inaccessible	remote	vacant	peaceful	busy
pleasure	unpleasant	pleasant	attractive	beautiful	

Transmission tower number YB/33

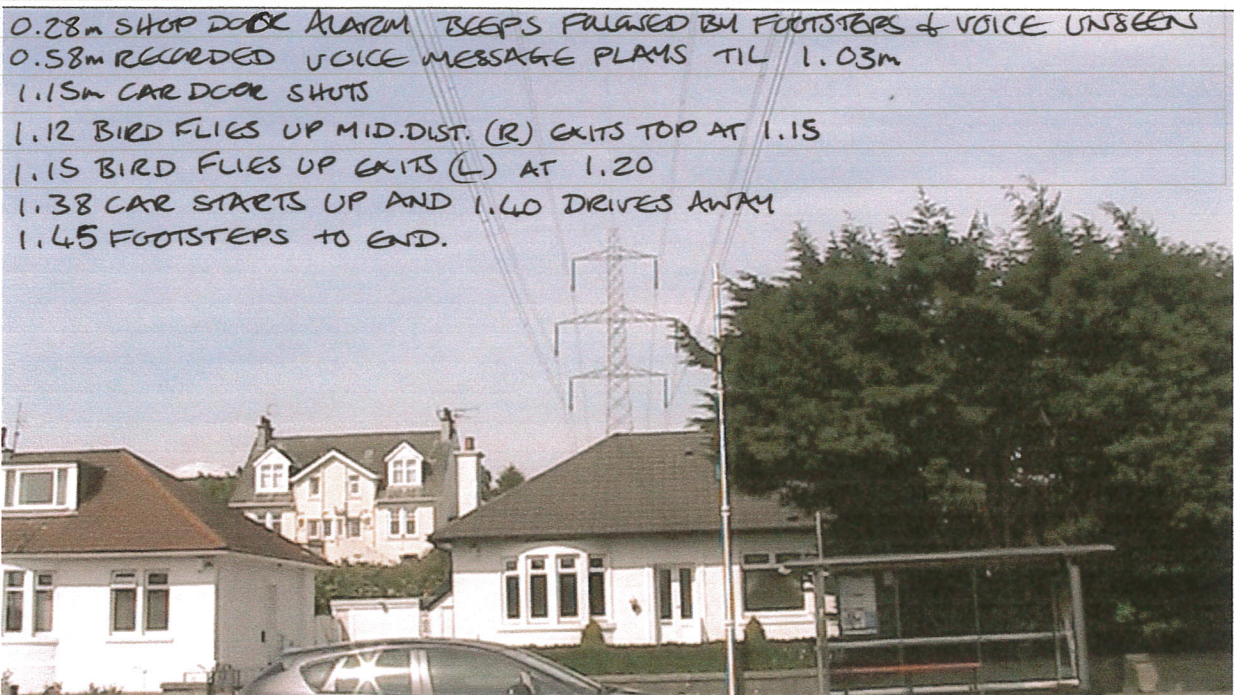
Video file number 33 May04-00005

Tower co-ordinates 55° 50' 49.9" N 04° 22' 16.3" W

SOUND

wind noise	bird song	traffic noise	voices	other
low/moderate/high	nearby/local/distant	nearby/local/distant	nearby/local/distant	nearby/local/distant
continuous	continuous	continuous	continuous	continuous
<u>frequent</u>	frequent	frequent	frequent	frequent
intermittent	intermittent	intermittent	intermittent	intermittent
occasional	<u>occasional</u>	occasional	<u>occasional</u>	occasional
blusters				

TIME SPECIFIC DETAILS



ACTIVITY

weather	vegetation	wildlife	people	<u>CONSTANT</u> traffic	other
fast	still		standing	bikes	
slow	<u>some movement</u>		sitting	motorbikes	
moving clouds	much movement		strolling	<u>cars</u>	
moving shadows			walking	<u>vans</u>	
precipitation			running	<u>trucks</u>	
				<u>BUSES</u>	

PERCEPTION

security	intimate	<u>comfortable</u>	safe	<u>unsettling</u>	threatening
stimulus	monotonous	bland	interesting	<u>challenging</u>	inspiring
tranquillity	inaccessible	remote	vacant	peaceful	<u>busy</u>
pleasure	unpleasant	pleasant	attractive	beautiful	

Transmission tower number YB/34

Video file number 34MAY004-055556

Tower co-ordinates 55 ° 50 ' 59.8" N 04 ° 22 ' 13.8" W

SOUND

wind noise	bird song	traffic noise	voices	other <u>VACUUM CLEANER</u>
<u>low/moderate/high</u>	nearby/ <u>local</u> /distant	nearby/local/ <u>distant</u>	nearby/ <u>local</u> /distant	nearby/local/distant
continuous	continuous	continuous	continuous	continuous
frequent	frequent	<u>frequent</u>	<u>frequent</u>	frequent
intermittent	intermittent	intermittent	intermittent	intermittent
<u>occasional</u>	<u>occasional</u>	occasional	occasional	occasional
blusters				

TIME SPECIFIC DETAILS

- 1.10 DOMESTIC VACUUM CLEANER STARTS UP & CONTINUES TO END UNSEEN
- 1.26 BIRD TWITTERS UNSEEN
- 1.45 MANS VOICE CALLS NEARBY UNSEEN
- 1.45 CYCLIST ENTERS R EXITS L AT 1.58



ACTIVITY CONSTANT MOVEMENT OF PEOPLE AND OCC CARS IN MID DISTANCE

weather	vegetation	wildlife	<u>CONTINUOUS</u> people	<u>CONTINUOUS</u> traffic	other <u>DOGS.</u>
fast	still		standing	<u>bikes</u>	
slow	<u>some movement</u>		sitting	motorbikes	
moving clouds	much movement		<u>strolling</u>	<u>Cars</u>	
moving shadows			<u>walking</u>	vans	
precipitation			running	trucks	
				<u>BUSES</u>	

PERCEPTION

security	intimate	<u>comfortable</u>	safe	unsettling	threatening
stimulus	monotonous	bland	<u>interesting</u>	challenging	inspiring
tranquillity	inaccessible	remote	vacant	peaceful	<u>busy</u>
pleasure	unpleasant	<u>pleasant</u>	attractive	beautiful	

Transmission tower number YB/35

Video file number 35 MAR004-00007

Tower co-ordinates 55° 51' 08.8" N 04° 22' 11.6" W

SOUND

wind noise	bird song	traffic noise	voices + children	other DOGS
low/moderate/high	nearby/local/distant	nearby/local/distant	nearby/local/distant	nearby/local/distant
<u>continuous</u>	continuous	continuous	<u>continuous</u>	continuous
frequent	<u>frequent</u>	<u>frequent</u>	frequent	frequent
intermittent	intermittent	intermittent	intermittent	intermittent
occasional	occasional	occasional	occasional	<u>occasional</u>
<u>blusters</u>				

TIME SPECIFIC DETAILS



ACTIVITY CONSTANT MOVEMENT - PEOPLE, CARS & BUSES IN MID DISTANCE

weather	vegetation	wildlife	people	traffic	other
fast	still		<u>standing</u>	bikes	
slow	<u>some movement</u>		<u>sitting</u>	motorbikes	
moving clouds	much movement		<u>strolling</u>	<u>cars</u>	
moving shadows			<u>walking</u>	<u>vans</u>	
precipitation			<u>running</u>	trucks	
				<u>BUSES</u>	

PERCEPTION

security	intimate	<u>comfortable</u>	safe	unsettling	threatening
stimulus	monotonous	bland	<u>interesting</u>	challenging	inspiring
tranquillity	inaccessible	remote	vacant	peaceful	<u>busy</u>
pleasure	unpleasant	<u>pleasant</u>	attractive	beautiful	

Transmission tower number YB/36

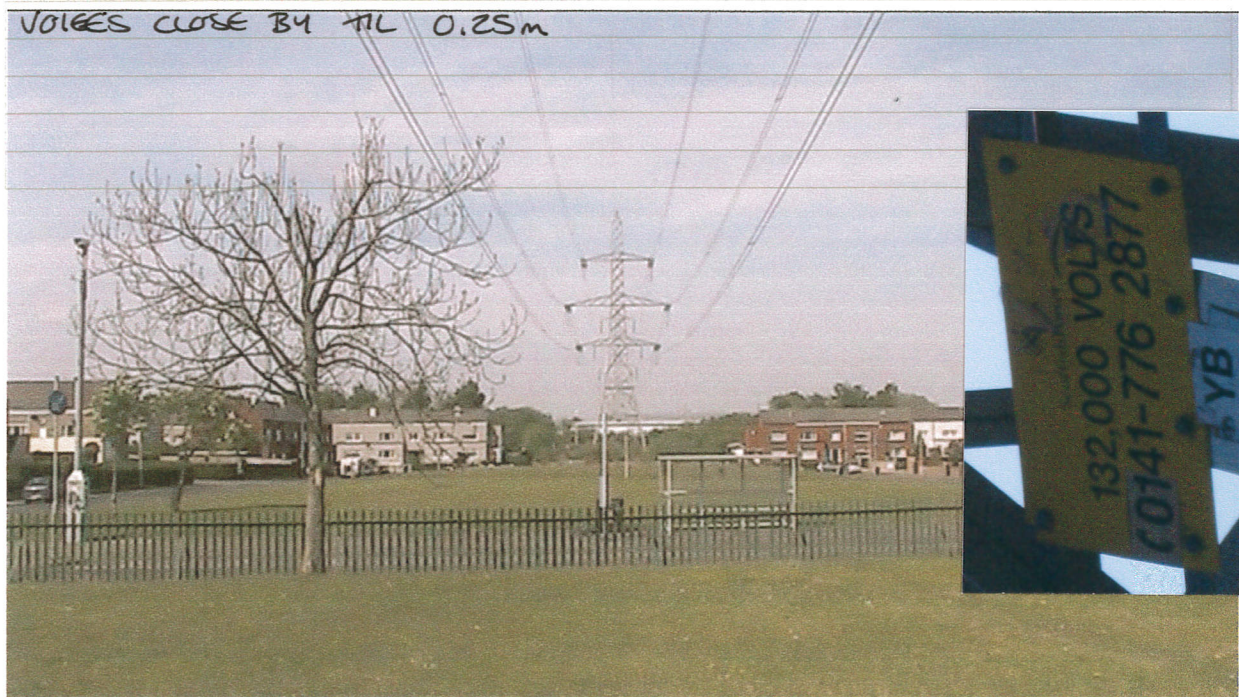
Video file number 36MOV004-00008

Tower co-ordinates 55° 51' 19.4" N 04° 22' 08.9" W

SOUND

wind noise	bird song	traffic noise	voices	other
low/moderate/high	nearby/local/distant	nearby/local/distant	nearby/local/distant	nearby/local/distant
continuous	continuous	continuous	continuous	continuous
frequent	frequent	frequent	frequent	frequent
intermittent	intermittent	intermittent	intermittent	intermittent
occasional	occasional	occasional	occasional	occasional
blusters				

TIME SPECIFIC DETAILS



ACTIVITY

weather	vegetation	wildlife	people	traffic	other
fast	still		standing	bikes	
slow	some movement		sitting	motorbikes	
moving clouds	much movement		strolling	cars	
moving shadows			walking	vans	
precipitation			running	trucks	
				buses	
				taxis	

PERCEPTION

security	intimate	comfortable	safe	unsettling	threatening
stimulus	monotonous	bland	interesting	challenging	inspiring
tranquillity	inaccessible	remote	vacant	peaceful	busy
pleasure	unpleasant	pleasant	attractive	beautiful	