

Transmission tower number YB 23 Video file number _____

Tower co-ordinates 55 ° 49 '38.7" N 04 ° 23 '01.1" W

SOUND

wind noise	bird song	traffic noise	voices	other
low/moderate/high	nearby/local/distant	nearby/local/distant	nearby/local/distant	nearby/local/distant
continuous	continuous	continuous	continuous	continuous
frequent	frequent	frequent	frequent	frequent
intermittent	intermittent	intermittent	intermittent	intermittent
occasional	occasional	occasional	occasional	occasional
blusters				

TIME SPECIFIC DETAILS

ACTIVITY

weather	vegetation	wildlife	people	traffic	other
fast	still		standing	bikes	
slow	some movement		sitting	motorbikes	
moving clouds	much movement		strolling	cars	
moving shadows			walking	vans	
precipitation			running	trucks	

PERCEPTION

security	intimate	comfortable	safe	unsettling	threatening
stimulus	monotonous	bland	interesting	challenging	inspiring
tranquillity	inaccessible	remote	vacant	peaceful	busy
pleasure	unpleasant	pleasant	attractive	beautiful	

Transmission tower number YB/24 Video file number _____
 Tower co-ordinates 55° 49' 49.2" N 04° 22' 54.4" W

SOUND

wind noise	bird song	traffic noise	voices	other
low/moderate/high	nearby/local/distant	nearby/local/distant	nearby/local/distant	nearby/local/distant
continuous	continuous	continuous	continuous	continuous
frequent	frequent	frequent	frequent	frequent
intermittent	intermittent	intermittent	intermittent	intermittent
occasional	occasional	occasional	occasional	occasional
blusters				

TIME SPECIFIC DETAILS

ACTIVITY

weather	vegetation	wildlife	people	traffic	other
fast	still		standing	bikes	
slow	some movement		sitting	motorbikes	
moving clouds	much movement		strolling	cars	
moving shadows			walking	vans	
precipitation			running	trucks	

PERCEPTION

security	intimate	comfortable	safe	unsettling	threatening
stimulus	monotonous	bland	interesting	challenging	inspiring
tranquillity	inaccessible	remote	vacant	peaceful	busy
pleasure	unpleasant	pleasant	attractive	beautiful	

Transmission tower number 4B/25

Video file number 25nov006

Tower co-ordinates 55 ° 50 ' 03.5" N 04 ° 22 ' 54.2" W

SOUND

wind noise	bird song	traffic noise	voices	other <u>LEAVES RUSTLING ON TREES.</u>
low/moderate/high	nearby/local/distant	nearby/local/distant	nearby/local/distant	nearby/local/distant
continuous	<u>continuous</u>	continuous	continuous	<u>continuous</u>
<u>frequent</u>	frequent	frequent	frequent	frequent
intermittent	intermittent	intermittent	intermittent	intermittent
occasional	occasional	occasional	occasional	occasional
<u>blusters</u>	<u>BLACKBIRDS</u>			

TIME SPECIFIC DETAILS



ACTIVITY

weather	vegetation	wildlife	people	traffic	other
fast	still		standing	bikes	
slow	<u>some movement</u>		sitting	motorbikes	
moving clouds	much movement		strolling	cars	
moving shadows			walking	vans	
precipitation			running	trucks	

PERCEPTION

security	intimate	comfortable	safe	<u>unsettling</u>	threatening
stimulus	monotonous	bland	<u>interesting</u>	challenging	inspiring
tranquillity	inaccessible	remote	vacant	<u>peaceful</u>	busy
pleasure	unpleasant	<u>pleasant</u>	attractive	beautiful	

SLIGHT - UNKNOWN TERRITORY.

Transmission tower number YB/26+27

Video file number 26,27MOV004-00002

Tower co-ordinates 55° 50' 06.8" N 04° 22' 10.6" W
55° 50' 07.9" N 04° 22' 10.1" W

SOUND

wind noise	bird song	traffic noise	voices	other
low/moderate/high	nearby/local/distant	nearby/local/distant	nearby/local/distant	LEAVES RUSTLING
continuous	<u>continuous</u>	continuous	continuous	ON TREES
frequent	frequent	frequent	frequent	
<u>intermittent</u>	intermittent	intermittent	intermittent	
occasional	occasional	occasional	occasional	
<u>blusters</u>				

TIME SPECIFIC DETAILS



ACTIVITY

weather	vegetation	wildlife	people	traffic
fast	still		standing	bikes
slow	<u>some movement</u>		sitting	motorbikes
moving clouds	much movement		strolling	cars
moving shadows			walking	vans
precipitation			running	trucks

PERCEPTION

security	intimate	<u>comfortable</u>	safe	<u>unsettling</u>	threatening
stimulus	monotonous	bland	<u>interesting</u>	challenging	inspiring
tranquillity	inaccessible	remote	vacant	<u>peaceful</u>	busy
pleasure	unpleasant	<u>pleasant</u>	attractive	beautiful	

SIGHT - UNKNOWN TERRITORY.

Transmission tower number YB/28

Video file number 28MOV004-00003

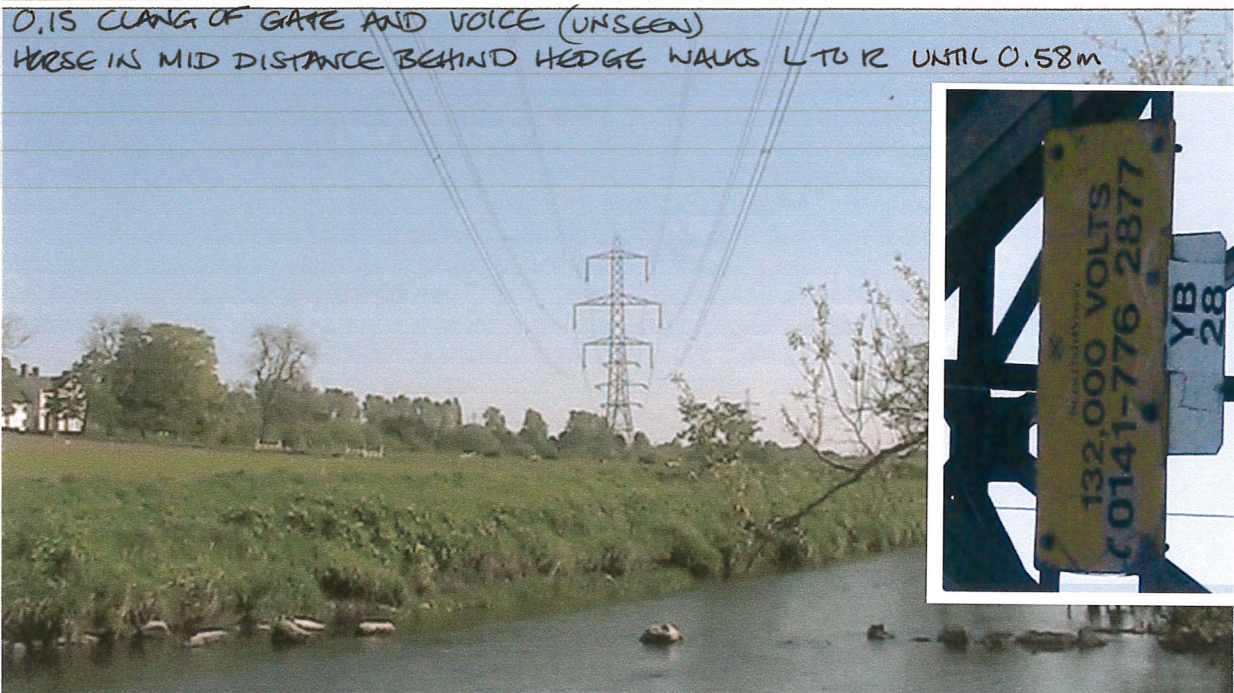
Tower co-ordinates 55° 50' 15.0" N

04° 22' 53.6" W

SOUND

wind noise	bird song	traffic noise	voices	other WATER
low/moderate/high	nearby/local/distant	nearby/local/distant	nearby/local/distant	nearby/local/distant
<u>continuous</u>	<u>continuous</u> <u>VARIED</u>	continuous	continuous	<u>continuous</u>
frequent	frequent	frequent	frequent	frequent
intermittent	intermittent	intermittent	intermittent	intermittent
occasional	occasional	occasional	occasional	occasional
blusters				

TIME SPECIFIC DETAILS



ACTIVITY

weather	vegetation	wildlife	people	traffic	other WATER
fast	still		standing	bikes	<u>MOVING RIVER</u>
slow	<u>some movement</u>		sitting	motorbikes	
moving clouds	much movement		strolling	cars	
moving shadows			walking	vans	
precipitation			running	trucks	

PERCEPTION

security	intimate	<u>comfortable</u>	safe	unsettling	threatening
stimulus	monotonous	bland	<u>interesting</u>	challenging	inspiring
tranquillity	inaccessible	remote	vacant	<u>peaceful</u>	busy
pleasure	unpleasant	<u>pleasant</u>	attractive	beautiful	