

Transmission tower number YB/ 15 Video file number 15MA003-00002  
 Tower co-ordinates 55° 48' 59.3" N 04° 24' 53.1" W

**SOUND**

wind noise	bird song	traffic noise	voices	other <u>DOGS MOVING</u>
<u>low/moderate/high</u>	nearby/ <u>local</u> /distant	nearby/local/ <u>distant</u>	nearby/local/distant	<u>nearby</u> /local/distant
<u>continuous</u>	<u>continuous</u> <u>VARIED</u>	<u>continuous</u>	continuous	continuous
frequent	frequent	frequent	frequent	frequent
intermittent	intermittent	intermittent	intermittent	intermittent
occasional	occasional	occasional	occasional	<u>occasional</u>
<u>blusters</u>				

**TIME SPECIFIC DETAILS**

0.12 BIRD IN DISTANCE FLIES UP FROM TREE LINE  
 1.19 BIRD APPROACHES, SWOOPS L TO R EXITS L 1.20 m  
 0.48 CAR IN DISTANCE MOVES L TO R. TRAFFIC CONTINUES  
 1.24 FOREGROUND PARICENS UNDER CLOUD, REMAINS DA  
 SILHOUETTE TO END.

**ACTIVITY**

weather	vegetation	wildlife	people	traffic	other
fast	still		standing	bikes	
<u>slow</u>	<u>some movement</u>		sitting	motorbikes	
<u>moving clouds</u>	much movement		strolling	<u>cars</u> <u>DISTANT</u>	
moving shadows			walking	vans	
precipitation			running	trucks	

**PERCEPTION**

security	intimate	comfortable	safe	<u>unsettling</u>	threatening
stimulus	monotonous	bland	<u>interesting</u>	challenging	inspiring
tranquillity	inaccessible	remote	vacant	<u>peaceful</u>	busy
pleasure	unpleasant	<u>pleasant</u>	attractive	beautiful	

SMALLISH FIELD WITH CATTLE WITH NEW CALVES AT HEEL



Transmission tower number YB/16

Video file number 16MOV004-00003

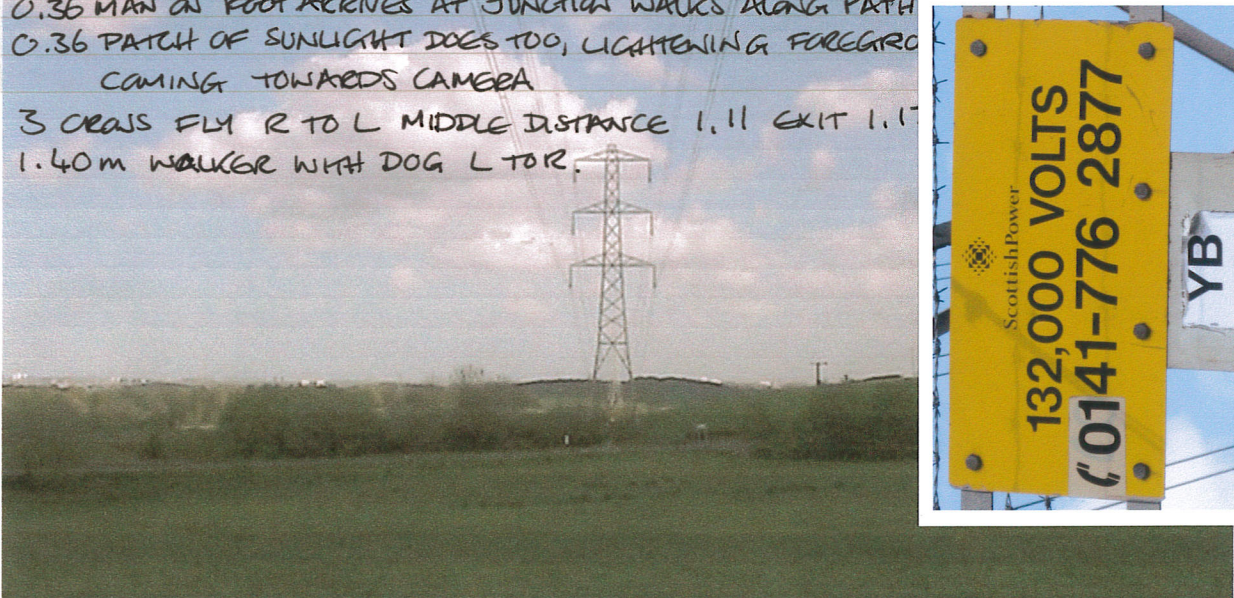
Tower co-ordinates 55° 49' 01.3" N 04° 24' 36.1" W

**SOUND**

wind noise	bird song	traffic noise	voices	other
<u>low/moderate/high</u>	nearby/local/distant	<u>nearby/local/distant</u>	nearby/local/distant	nearby/local/distant
continuous	continuous	<u>continuous</u>	continuous	continuous
frequent	frequent	frequent	frequent	frequent
<u>intermittent</u>	intermittent	intermittent	intermittent	intermittent
occasional	occasional	occasional	occasional	occasional
blusters				

**TIME SPECIFIC DETAILS**

REGULAR TRAFFIC THROUGHOUT EG  
TRUCK 0.01, BUS 0.30, TRUCK 1.05, VANS 1.12, TRUCK 1.17 + VARIOUS CARS  
0.36 MAN ON FOOT ARRIVES AT JUNCTION WALKS ALONG PATH  
0.36 PATCH OF SUNLIGHT DOES TOO, LIGHTENING FOREGROUND  
COMING TOWARDS CAMERA  
3 CRABS FLY R TO L MIDDLE DISTANCE 1.11 EXIT 1.11  
1.40 m WALKER WITH DOG L TO R.



**ACTIVITY**

weather	vegetation	wildlife	people	traffic	other
fast	still	<u>BIRDS FLYING</u>	standing	bikes	
<u>slow</u>	<u>some movement</u>	<u>(SEE ABOVE)</u>	sitting	motorbikes	
<u>moving clouds</u>	much movement		strolling	<u>cars</u>	
<u>moving shadows</u>			<u>walking</u>	<u>vans</u>	
precipitation			running	<u>trucks</u>	

**PERCEPTION**

security	intimate	<u>comfortable</u>	safe	unsettling	threatening
stimulus	monotonous	bland	<u>interesting</u>	challenging	inspiring
tranquillity	inaccessible	remote	vacant	<u>peaceful</u>	busy
pleasure	unpleasant	<u>pleasant</u>	attractive	beautiful	



Transmission tower number 1B/14

Video file number 14MAY002-00001

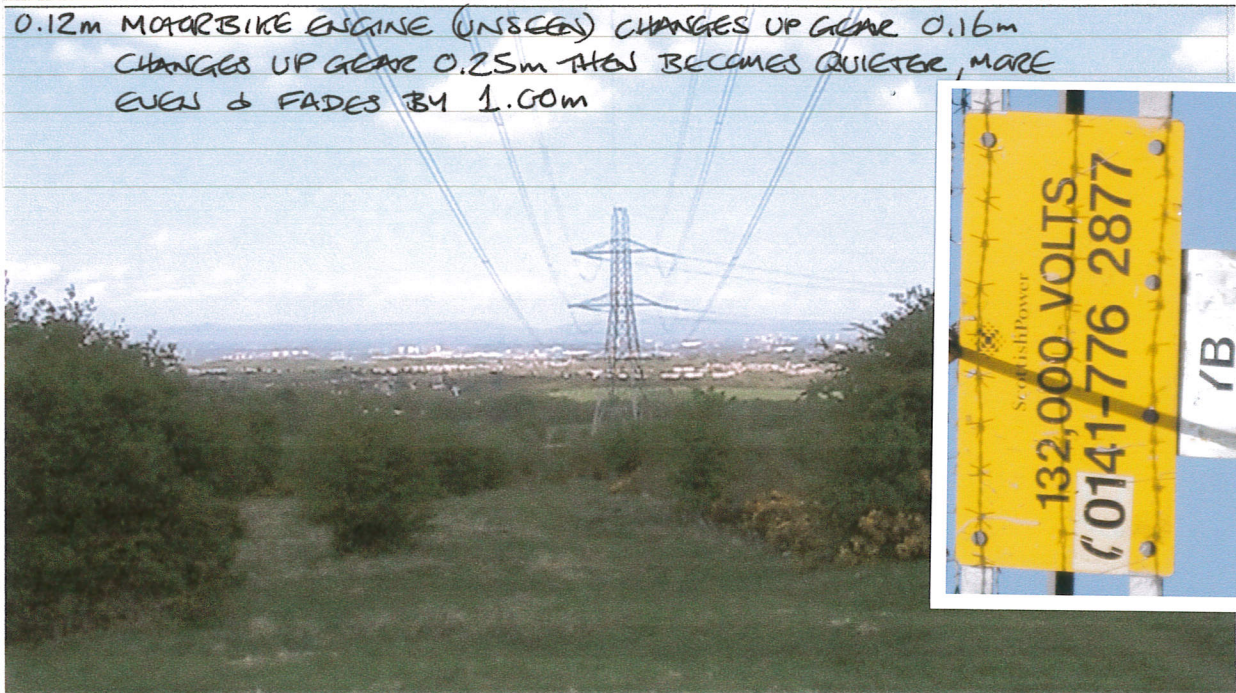
Tower co-ordinates 55° 48' 57.2" N 04° 25' 10.3" W

**SOUND**

wind noise	bird song	traffic noise	voices	other <u>DOGS BARKING</u>
low/moderate/high	<u>nearby/local</u> /distant	nearby/local/ <u>distant</u>	nearby/local/distant	<u>nearby/local</u> /distant
continuous	<u>continuous</u>	<u>continuous</u>	continuous	continuous
<u>frequent</u>	frequent	frequent	frequent	frequent
intermittent	intermittent	intermittent	intermittent	intermittent
occasional	occasional	occasional	occasional	<u>occasional</u>
blusters	<u>THROBLES &amp; OTHERS</u>			

**TIME SPECIFIC DETAILS**

0.12m MOTORBIKE ENGINE (UNSEEN) CHANGES UP GEAR 0.16m  
 CHANGES UP GEAR 0.25m THEN BECOMES QUIETER, MORE  
 EVEN & FADES BY 1.00m



**ACTIVITY**

weather	vegetation	wildlife	people	traffic	other
fast	still		standing	bikes	
<u>slow</u>	<u>some movement</u>		sitting	motorbikes	
<u>moving clouds</u>	much movement		strolling	cars	
moving shadows			walking	vans	
precipitation			running	trucks	

**PERCEPTION**

security	intimate	<u>comfortable</u>	safe	unsettling	threatening
stimulus	monotonous	bland	<u>interesting</u>	challenging	inspiring
tranquillity	inaccessible	remote	vacant	<u>peaceful</u>	busy
pleasure	unpleasant	<u>pleasant</u>	attractive	beautiful	



Transmission tower number YB117

Video file number 17M0005-00504

Tower co-ordinates 55° 49' 03.4" N 04° 24' 17.1" W

**SOUND**

wind noise	bird song	traffic noise	voices	other <u>DOGS MOVING</u>
low/moderate/high	<u>nearby/local/distant</u>	<u>nearby/local/distant</u>	nearby/local/distant	nearby/local/distant
continuous	<u>continuous</u> <u>VARIABLE</u>	<u>continuous</u>	continuous	continuous
frequent	frequent	frequent	frequent	frequent
intermittent	intermittent	intermittent	intermittent	<u>intermittent</u>
occasional	occasional	occasional	occasional	occasional
blusters	<u>GREAT TIT</u> <u>GRASSHOPPER WABLER</u>			

**TIME SPECIFIC DETAILS**



**ACTIVITY**

weather	vegetation	wildlife	people	traffic	other
fast	still		standing	bikes	
<u>slow</u>	<u>some movement</u>		sitting	motorbikes	
<u>moving clouds</u>	much movement		strolling	cars	
moving shadows			walking	vans	
precipitation			running	trucks	

**PERCEPTION**

security	intimate	<u>comfortable</u>	safe	unsettling	threatening
stimulus	monotonous	bland	<u>interesting</u>	challenging	inspiring
tranquillity	inaccessible	remote	vacant	<u>peaceful</u>	busy
pleasure	unpleasant	<u>pleasant</u>	attractive	beautiful	



Transmission tower number YB/18

Video file number 18 M0006-00005

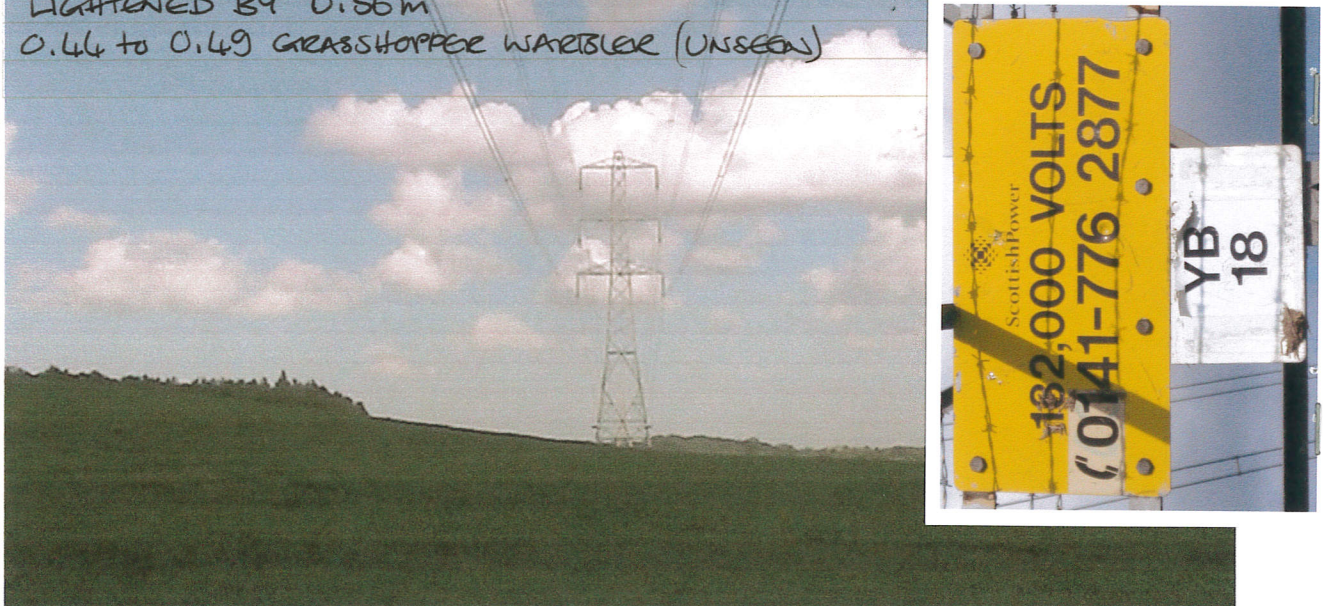
Tower co-ordinates 55° 49' 05.6" N 04° 23' 58.3" W

**SOUND**

wind noise	bird song	traffic noise	voices	other <u>DOGS BARKING</u>
low/moderate/high	nearby/local/distant	nearby/local/distant	nearby/local/distant	nearby/local/distant
continuous	<u>continuous</u> <u>VARIABLE</u>	<u>continuous</u>	continuous	continuous
frequent	frequent	frequent	frequent	frequent
<u>intermittent</u>	intermittent	intermittent	intermittent	<u>intermittent</u>
occasional	occasional	occasional	occasional	occasional
<u>blusters</u>				

**TIME SPECIFIC DETAILS**

FOREGROUND DARK THEN PATCH OF SUNLIGHT COMES FROM DISTANCE TOWARDS CAMERA - 0.42m AT FOOT OF Pylon AND FOREGROUND LIGHTENED BY 0.56m  
0.44 to 0.49 GRASSHOPPER WARBLER (UNSEEN)



**ACTIVITY**

weather	vegetation	wildlife	people	traffic	other
fast	still		standing	bikes	
<u>slow</u>	<u>some movement</u>		sitting	motorbikes	
<u>moving clouds</u>	much movement		strolling	<u>cars</u> <u>DISTANT</u>	
<u>moving shadows</u>			walking	vans	
precipitation			running	trucks	

**PERCEPTION**

security	intimate	comfortable	safe	<u>unsettling</u>	threatening
stimulus	monotonous	bland	<u>interesting</u>	challenging	inspiring
tranquillity	inaccessible	remote	vacant	<u>peaceful</u>	busy
pleasure	unpleasant	<u>pleasant</u>	attractive	beautiful	

THESE FIELDS HAD ROBUST STOCKPROOF FENCING & WERE DIFFICULT TO GET INTO THEREFORE FELT AS THOUGH TRESSPASSING.



Transmission tower number YB/19

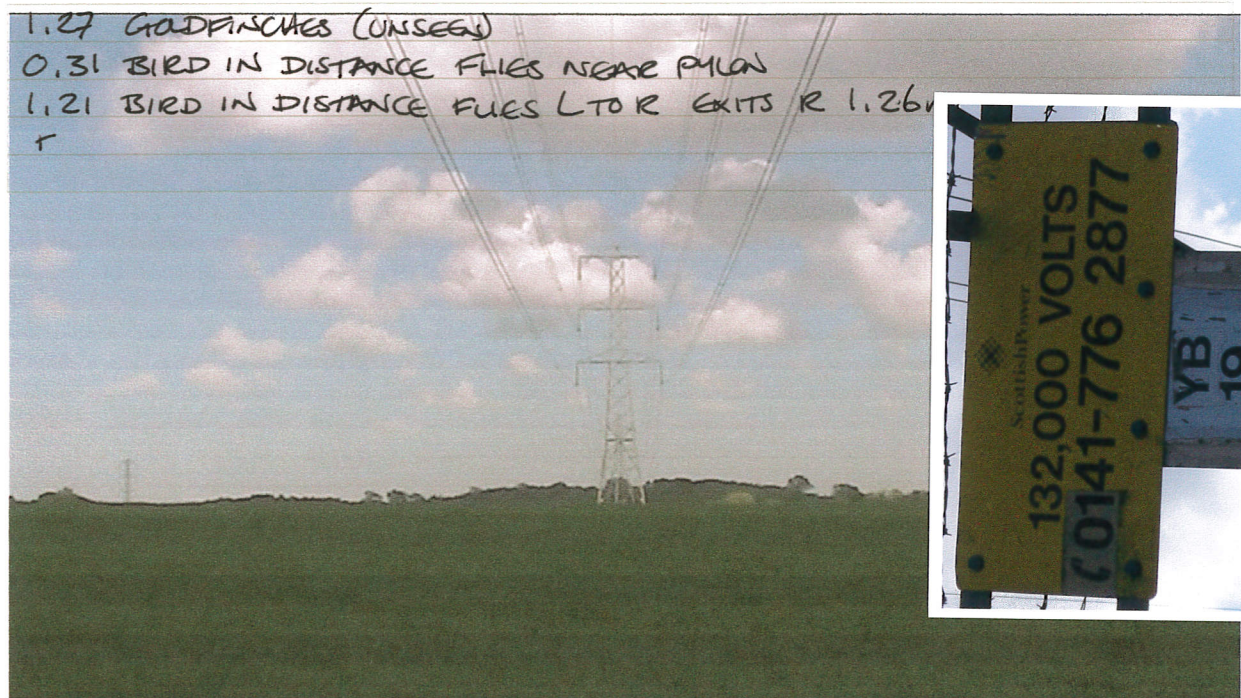
Video file number 19MOV007-00006

Tower co-ordinates 55° 49' 07.6" N 04° 23' 41.0" W

**SOUND**

wind noise	bird song	traffic noise	voices	other
<u>low/moderate/high</u>	nearby/local/ <u>distant</u>	<u>nearby/local/distant</u>	nearby/local/distant	nearby/local/distant
<u>continuous</u>	continuous	<u>continuous</u>	continuous	continuous
frequent	frequent	frequent	frequent	frequent
intermittent	<u>intermittent</u>	intermittent	intermittent	intermittent
occasional	occasional	occasional	occasional	occasional
blusters				

**TIME SPECIFIC DETAILS**



**ACTIVITY**

weather	vegetation	wildlife	people	traffic	other
fast <u>slow</u>	still <u>some movement</u> much movement		standing sitting strolling walking running	bikes motorbikes cars vans trucks	<u>FOREGROUND</u> REMAINS DARK UNDER CLOUD SHADOW
<u>moving clouds</u> <u>moving shadows</u> precipitation					

**PERCEPTION**

security	intimate	comfortable	safe	<u>unsettling</u>	threatening
stimulus	monotonous	bland	<u>interesting</u>	challenging	inspiring
tranquillity	inaccessible	remote	vacant	<u>peaceful</u>	busy
pleasure	unpleasant	<u>pleasant</u>	attractive	beautiful	

THESE FIELDS HAD ROBUST STOCKPROOF FENCING & WERE DIFFICULT TO GET INTO THEREFORE FELT AS THOUGH TRESSPASSING